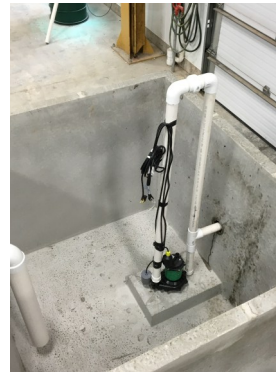




**Van Goethem**  
**Septic Systems Inc.**  
 Established 1974

E3055 County Road J  
 Kewaunee, WI 54216  
 (920) 362-2437  
 www.vangoethemseptic.com



Inlet Baffle

Orenco Biotube Effluent Filter

Pump and Floats Assembly

Electrical Junction

## 2026 3-Compartment Treatment Tank Pricing (990 Septic/270 Septic/775 Pump)

### Includes the Following:

- 36" of Plastic EZ-Set Manhole Riser (31" Exposed) per Manhole  
 (Green or Black Risers and Covers)
- Plastic Manhole Covers w/Weather Resistant Lock and Locking Ring
- Inlet Baffle
- Orenco Biotube Effluent Filter (FTPS0444-36) (1/16" Filtration)
- Champion CPES5 120v Effluent Pump with Pump Control Float
- High-water Alarm Float
- 2" Sch 40 PVC Union Quick Disconnect
- 2" PVC Force Main Discharge
- MIC Reduction Venting Assembly
- Vented Pump Chamber Manhole Cover
- Electrical Junction Box with Receptacle For Quick Disconnect

**\$5,150.00** (Prices Effective 4/1/2026)

*Pump and effluent filter substitutions may be made. Call for pricing.*

**!!! Prices subject to change at any time without notice !!!**